

ICB/ICS Development & Medicines Strategy Forum

Thursday 18th September 2025

Event Programme

Royal College of General Practitioners
30 Euston Square, London

This event will be funded by the following companies through event sponsorship, sponsored satellite sessions and stand sponsorship. These companies have had no input into the design or content of the conference agenda (other than their own sessions/stands) but will be in attendance on the day.

Headline sponsors: AstraZeneca, Roche Products Ltd

Stand sponsors: Besins Healthcare (UK) Ltd, Chiesi Ltd, Daiichi Sankyo, Ethypharm UK, Eli Lilly and Company Limited, Lupin Healthcare (UK) Ltd, Pfizer Ltd, Zentiva Pharma UK Ltd

AstraZeneca has provided sponsorship towards this independent Programme. AstraZeneca has had no editorial input into or control over the agenda, content development or choice of speakers, nor opportunity to influence, except for the AstraZeneca sponsored symposium presentation.

Roche Products Ltd has provided financial support for this meeting but had no involvement in the agenda other than the stated Roche organised presentation.

PM Healthcare Education Partner

Contents

Foreword	2
Agenda	5
Speakers	7
Exhibition Area Floorplan	13
Education Partner	14
Headline Sponsors	15
Stand Sponsors	16

Foreword



The best way to predict the future is to create it together

Throughout the history of PM Healthcare, we have experienced many changes in the structure of the NHS.

A constant through all those changes has been the professionalism and commitment of pharmacy in delivering the very best patient care. The 10 Year Health Plan brings challenges, but for a profession with a proven track record of adaptability and unwavering focus on improving medicines delivery to appropriate patients, it offers another opportunity for pharmacy to demonstrate real value to stakeholders across the system.

Our conference today has clear objectives:

- To share the latest information and interpretation of the 10 Year Health Plan, with particular focus on the future for pharmacy.
- To provide sessions from professional trainers and a radio journalist, that offer skills acquisition for communicating the benefits of pharmacy and ensuring that positive messages resonate.
- To conclude with a motivational session to uplift and motivate us all to be 1% better

At PM Healthcare, we see today as one of the most important conferences we have produced in our history, and we hope you find it both informative and uplifting.

On a personal note, I have enjoyed a long career working with pharmacy and have met some outstanding people within the profession - many of whom I would class as friends. If there is anything I can do to support you or your organisation in developing and successfully managing the 10 Year Health Plan, please do come and talk with me during the day.

A handwritten signature in black ink, appearing to read 'Ted Butler'.

Ted Butler

Chairman
PM Healthcare

UK Number: 07721 302925
Australia: +61 474 547360
ted.butler@pmhealthcare.co.uk

#PMHealthcare

JOURNAL

Incorporating *The Journal of Pharmacy Management* and *The Journal of Medicines Optimisation*

ABOUT THE JOURNAL



The **PM Healthcare Journal** was launched in July 2022, bringing into one publication the established heritage of our two previous Journals: *The Journal of Medicines Optimisation* and *The Journal of Pharmacy Management*

The **PM Healthcare Journal** is our quarterly publication that aims to help healthcare professionals thrive in a healthcare system that is undergoing fundamental challenge and change.

The Journal is where you can read about and share UK-wide examples of best practice, experiences, innovations and initiatives that support colleagues and benefit patients.

Pharmacy focussed, but also inclusive of other professions, patients and carers, our objective is to provide a hub of opinions, experiences and clinical expertise that is of practical use to our readers.

GET INVOLVED



We would like to invite you to get in touch with the editor directly to share ideas for articles that you think would be of interest to our readers (in pharmacy but also wider) and also your opinions, enthusiasms and fears for the future.



CONTACT

John Chater

Editor – PM Healthcare Journal

editor@pmpublications.co.uk

www.pmhealthcare.co.uk/journals

PM HEALTHCARE

2025/2026 CONFERENCE CALENDAR

15
OCT 25

**MANAGING LONG TERM CONDITIONS WITHIN THE ICS
STRUCTURE: CHALLENGES AND SUCCESSSES**

LONDON



12
NOV 25

NATIONAL FORUM FOR SCOTLAND

GLASGOW



26
FEB 26

THE NATIONAL MEDICINES VALUE FORUM

LONDON



23
APR 26

**ICB/ICS DEVELOPMENT & MEDICINES STRATEGY
FORUM**

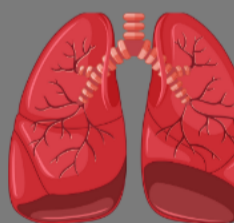
LONDON



9
JULY 26

**NATIONAL FORUM FOR RESPIRATORY MEDICINES
OPTIMISATION**

LONDON



**EACH CONFERENCE IS MULTI-STREAMED WITH
AGENDAS CREATED ALONGSIDE A STEERING GROUP
OF LEAD PHARMACISTS**

These events will be funded by Pharmaceutical Companies



Morning Sessions

Time	Session		
08:30	Registration and Networking Open		
09:15	<p>Chairman's Welcome PM Healthcare Auditorium</p>		
09:20	<p>The Future for Pharmacy in the New Restructured NHS in England - What we know and the opportunity to lead on medicines use Ewan Maule Clinical Director & Chief Pharmacist, North East and North Cumbria ICB Vanessa Burgess ICB Chief Pharmacist, NHS South East London ICB Auditorium</p>		
10:00	<p>Balancing Patient Outcomes and Costs in Ophthalmology Treatment Pathways Daren Hanumunthadu Consultant Ophthalmologist, Royal Free NHS Foundation Trust Catherine Thompson Associate Director Clinical Policy, Strategy and Individual Funding Requests, West Yorkshire ICB Auditorium <i>This is a promotional symposium organised and funded by Roche Products LTD. Prescribing information will be available at the meeting.</i></p> 		
10:30	Coffee and Networking in Exhibition Area		
11:00	<table border="0"> <tr> <td style="vertical-align: top;"> <p>Neighbourhood Health - What it means for pharmacy across all NHS sectors Nick Merrifield GP Partner; PCN Clinical Director; Deputy Clinical Director at Place, New Malden & Worcester Park PCN; SWL ICS Lelly Oboh Clinical & Care Professional Lead, Overprescribing, SEL ICB Consultant Pharmacist, Older People, Guys & St Thomas NHS Trust, SEL ICB Ankish Patel English Pharmacy Board Member, RPS Auditorium</p> </td> <td style="vertical-align: top;"> <p>How to Promote Pharmacy - Key steps for communicating the positive contribution to medicines optimisation Mark Brealey Director, Mark Brealey Communications Ltd G.4.5</p> </td> </tr> </table>	<p>Neighbourhood Health - What it means for pharmacy across all NHS sectors Nick Merrifield GP Partner; PCN Clinical Director; Deputy Clinical Director at Place, New Malden & Worcester Park PCN; SWL ICS Lelly Oboh Clinical & Care Professional Lead, Overprescribing, SEL ICB Consultant Pharmacist, Older People, Guys & St Thomas NHS Trust, SEL ICB Ankish Patel English Pharmacy Board Member, RPS Auditorium</p>	<p>How to Promote Pharmacy - Key steps for communicating the positive contribution to medicines optimisation Mark Brealey Director, Mark Brealey Communications Ltd G.4.5</p>
<p>Neighbourhood Health - What it means for pharmacy across all NHS sectors Nick Merrifield GP Partner; PCN Clinical Director; Deputy Clinical Director at Place, New Malden & Worcester Park PCN; SWL ICS Lelly Oboh Clinical & Care Professional Lead, Overprescribing, SEL ICB Consultant Pharmacist, Older People, Guys & St Thomas NHS Trust, SEL ICB Ankish Patel English Pharmacy Board Member, RPS Auditorium</p>	<p>How to Promote Pharmacy - Key steps for communicating the positive contribution to medicines optimisation Mark Brealey Director, Mark Brealey Communications Ltd G.4.5</p>		
11:45	Movement Break		
11:55	<table border="0"> <tr> <td style="vertical-align: top;"> <p>Strategic Commissioning by the ICB - The Vision How pharmacy can make this work Kenny Li Chief Pharmacist, NHS Greater Manchester Auditorium</p> </td> <td style="vertical-align: top;"> <p>How can the pharmaceutical industry help pharmacy to deliver better access to medicines and remain within the ABPI Code of Practice? Reena Patel Senior Healthcare Strategy Consultant & Principal Pharmacist, RP Healthcare Consultancy obo Leeds Health & Care Partnership-West Leeds PCN Toni Larter Medicines Optimisation Service Improvement Lead, West Yorkshire Health & Care Partnership G.4.5</p> </td> </tr> </table>	<p>Strategic Commissioning by the ICB - The Vision How pharmacy can make this work Kenny Li Chief Pharmacist, NHS Greater Manchester Auditorium</p>	<p>How can the pharmaceutical industry help pharmacy to deliver better access to medicines and remain within the ABPI Code of Practice? Reena Patel Senior Healthcare Strategy Consultant & Principal Pharmacist, RP Healthcare Consultancy obo Leeds Health & Care Partnership-West Leeds PCN Toni Larter Medicines Optimisation Service Improvement Lead, West Yorkshire Health & Care Partnership G.4.5</p>
<p>Strategic Commissioning by the ICB - The Vision How pharmacy can make this work Kenny Li Chief Pharmacist, NHS Greater Manchester Auditorium</p>	<p>How can the pharmaceutical industry help pharmacy to deliver better access to medicines and remain within the ABPI Code of Practice? Reena Patel Senior Healthcare Strategy Consultant & Principal Pharmacist, RP Healthcare Consultancy obo Leeds Health & Care Partnership-West Leeds PCN Toni Larter Medicines Optimisation Service Improvement Lead, West Yorkshire Health & Care Partnership G.4.5</p>		
12:40	Standing Buffet Lunch and Networking in Exhibition Area		

Afternoon Sessions

Time	Session		
12:40	Standing Buffet Lunch and Networking in Exhibition Area		
13:40	<p>Optimising Severe Asthma Referral from Primary Care</p> <p>Liz Sadler Lead Nurse For Adult Asthma, Dudley Group NHS Foundation Trust</p> <p>Auditorium <i>This is a non-promotional symposium sponsored and organised by AstraZeneca, intended for UK HCPs only</i></p>		
14:10	Movement Break		
14:15	<table border="0"> <tr> <td style="vertical-align: top;"> <p>Population Health and Other Tools to Help the Profession Deliver on the New Medicines Agenda</p> <p>Dr Matthew Adesuyan Lead Pharmacist – Population Health and Health Inequalities, NHS South East London Integrated Care</p> <p>Auditorium</p> </td> <td style="vertical-align: top;"> <p>Influencing Upwards - A skill necessary to achieve effective recognition of pharmacy</p> <p>Miranda Hill Leadership Trainer, Facilitator of Learning & Qualified Coach, Untapped Consulting Ltd</p> <p>G.4.5</p> </td> </tr> </table>	<p>Population Health and Other Tools to Help the Profession Deliver on the New Medicines Agenda</p> <p>Dr Matthew Adesuyan Lead Pharmacist – Population Health and Health Inequalities, NHS South East London Integrated Care</p> <p>Auditorium</p>	<p>Influencing Upwards - A skill necessary to achieve effective recognition of pharmacy</p> <p>Miranda Hill Leadership Trainer, Facilitator of Learning & Qualified Coach, Untapped Consulting Ltd</p> <p>G.4.5</p>
<p>Population Health and Other Tools to Help the Profession Deliver on the New Medicines Agenda</p> <p>Dr Matthew Adesuyan Lead Pharmacist – Population Health and Health Inequalities, NHS South East London Integrated Care</p> <p>Auditorium</p>	<p>Influencing Upwards - A skill necessary to achieve effective recognition of pharmacy</p> <p>Miranda Hill Leadership Trainer, Facilitator of Learning & Qualified Coach, Untapped Consulting Ltd</p> <p>G.4.5</p>		
15:00	Coffee and Networking in Exhibition Area		
15:30	<p>Making the 1% Difference - Performing Under Pressure</p> <p>Experience this practical 45-minute keynote guaranteed to give you tools you can use to help you deal with day-to-day pressure in your personal and work life. This is a practical positivity tool kit created and presented by Steve Head.</p> <p>Steve Head Performance Coach to the England Wheelchair Rugby World Champions, and International Speaker, Steve Head Ltd</p> <p>Auditorium</p>		
16:15	Conference Close		



This event will be funded by the following companies through event sponsorship, sponsored satellite sessions and stand sponsorship. These companies have had no input into the design or content of the conference agenda (other than their own sessions/stands) but will be in attendance on the day.

Headline sponsors: AstraZeneca, Roche Products Ltd

Stand sponsors: Besins Healthcare (UK) Ltd, Chiesi Ltd, Daiichi Sankyo, Ethypharm UK, Eli Lilly and Company Limited, Lupin Healthcare (UK) Ltd, Pfizer Ltd, Zentiva Pharma UK Ltd

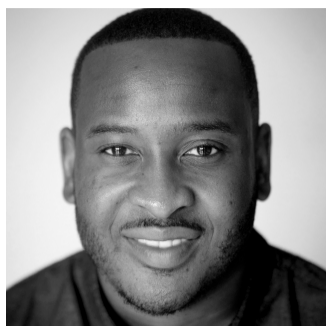
AstraZeneca has provided sponsorship towards this independent Programme. AstraZeneca has had no editorial input into or control over the agenda, content development or choice of speakers, nor opportunity to influence, except for the AstraZeneca sponsored symposium presentation.

Roche Products Ltd has provided financial support for this meeting but had no involvement in the agenda other than the stated Roche organised presentation.

PM Healthcare Education Partner



Speakers



Dr Matthew Adesuyan

Dr Matthew Adesuyan is the Lead Pharmacist for Population Health and Health Inequalities at NHS South East London ICB. He combines clinical and research expertise to drive strategic initiatives that improve medication access and reduce health disparities across diverse communities. His work centres on applying population health insights to inform commissioning decisions, optimise medicines use, and support the delivery of equitable healthcare.

A passionate advocate for inclusive, data-informed innovation, Dr Adesuyan is committed to supporting better outcomes for patients and communities. He champions the role of pharmacy professionals in leading change across the NHS's evolving medicines landscape.

14:15-15:00 Population Health and Other Tools to Help the Profession Deliver on the New Medicines Agenda

This session will explore how population health approaches can support pharmacy teams in delivering on the NHS's evolving healthcare strategy. Dr Matthew Adesuyan will outline how data-driven insights, risk stratification and system-level thinking can be applied to optimise medicines use, reduce inequalities and improve patient outcomes. With practical examples and a focus on real-world application, the session will help delegates understand how to translate population health concepts into meaningful action across healthcare settings.



Mark Brealey

Mark Brealey specialises in media training the health sector and has helped clients face national and international attention for more than two decades.

He began in journalism, spending 12 years in local newspapers, a national news agency and then the BBC in Leeds before moving into media training and public relations in 2001.

He worked initially as a PR consultant and head of media training for one of the country's top health PR agencies, before setting up his own media training business in 2006. Since then he has helped managers and clinicians face journalists on some of the biggest health crises and controversies to hit the headlines.

His key advice: always remember your audience.

11:00-11:45 How to promote Pharmacy - Key steps for communicating the positive contribution to medicines optimisation

Has it ever been more important for pharmacy to raise its profile – and its voice?

But what's the story, and how can we tell it to journalists and the public whilst navigating politics and pitfalls?

This interactive session will guide you through preparing clear, concise messages and skills for managing a media interview. You'll even get chance to face a few mock media interview questions (should you volunteer).

It's a safe space to tackle something potentially daunting – and the skills are not just useful for media settings.

Speakers



Vanessa Burgess

Vanessa Burgess is the Chief Pharmacist for the South East London Integrated Care Board and a Fellow of the Royal Pharmaceutical Society. She provides strategic leadership for pharmacy and medicines optimisation across the ICS, overseeing a significant programme to deliver medicines value for a £850m prescribing budget. Vanessa leads collaborative system-wide initiatives to improve patient outcomes, reduce health inequalities, and integrate community pharmacy into population health strategies, while championing inclusive professional practice, workforce development, and evidence-based transformation in pharmaceutical care.

Vanessa is recognised for her ability to work with others and secure solution focused, shared approaches to transformation and improvement. She works at system, regional and national level, working to remove barriers for patients in accessing high cost drugs. Outside work, she is learning to play cricket alongside a love of dog walking and time with her family.

09:20-10:00 The Future for Pharmacy in the new restructured NHS in England - What we know and the opportunity to lead on medicines use

A facilitated discussion on the future of medicines and pharmacy in the new NHS landscape. Covering issues including:

- professional leadership at this time of change
- how medicines might be optimised across a system in the new world
- what the transfer and delegation of functions might look like over the next 3-5 years
- a view on where the new direction of travel might take us and what the 10 year plan means for medicines and pharmacy



Steve Head

Steve is currently the performance Coach to the England Wheelchair Rugby League World Champions an inspirational Keynote Speaker and Trainer. Known by his clients as a dynamic speaker with practical ideas that simply work.

Over the past 23 years, he has delivered over 2500 inspirational, uplifting, and interactive presentations to help organisations, teams and individuals deliver sustained personal, team and business success, and is now one of the most sought-after speakers in the UK.

He also brings 16 years' experience in business/sales management, people leadership, marketing and training. As well as 40+ years' experience as a top sports coach. He's even worked on BBCs Strictly Come Dancing. Steve is also a Fellow of the Professional Speaking Assoc and was awarded the prestigious PSAE (award for excellence in speaking) in 2014.

Audiences will experience a fast paced interactive and practical session. Steve's sessions are designed specifically to address the various emotional, practical and psychological challenges that will help you, PAUSE, THINK, AND TAKE CONTROL. Steve shares simple tools that are practical, up to date and relevant but can be applied immediately both in your work and personal life. It will help you to perform more consistently under pressure and get the best out of your colleagues, your team and your clients.

As a result of Steve's sessions, clients consistently report that they leave more motivated and engaged, with increased mental resilience and wellbeing, they see greater individual performance, more discretionary effort, increased productivity, and overall enhanced business results. And more importantly with the tools to help sustain this long after the event has ended.

15:30-16:15 Making the 1% Difference – Performing Under Pressure

Experience this practical 45-minute keynote guaranteed to give you tools you can use to help you deal with day to day pressure in your personal and work life. This is a practical positivity tool kit created and presented by Steve Head.

Speakers



Miranda Hill

Miranda is a committed and passionate Learning & Development Specialist with over 20 years of experience in the UK Pharmaceutical sector. She is a qualified performance coach and a passionate developer of people. Miranda strongly believes that raising personal awareness and emotional intelligence can transform performance.

In 2018 she founded Untapped Consulting Ltd with the goal of supporting individuals and teams realise their full potential.

She has considerable experience in commercial skills training, leadership and team development, people management and continuous improvement. Miranda is a confident facilitator and presenter and has a motivational and results-orientated approach that inspires and influences people to challenge themselves and perform at their best.

14:15-15:00 Influencing Upwards - A Skill Necessary to Achieve Effective Recognition of Pharmacy

Are you passionate about advocating the role of pharmacy and wanting to champion its value, but not sure how?

Do you lie awake at night considering how you could elevate the profession's visibility and perception?

Do you have innovative and pioneering ideas, but don't know how to influence and shape decisions of those in leadership?

If so, then come and join me in my workshop on 'Influencing Upwards for Pharmacists', where you will learn about core influencing skills and have an opportunity to explore 'real' scenarios from which to develop influencing strategies for success.



Toni Larter

Toni has over 20 years' experience working for the 3rd sector/public sector in health and wellbeing, more specifically in Social Housing/Mental Health/Social Prescribing. Toni joined the NHS 6 years ago as Patient Engagement Lead on the Leeds Cancer Programme and now works in the Medicines Optimisation Team to help provide the best value for Leeds patients and the Leeds pound.

11:55-12:40 How can the pharmaceutical industry help pharmacy deliver better access to medicines and remain within the ABPI Code of Practice?

This session will explore how pharmacy teams within Integrated Care Systems can work collaboratively with the pharmaceutical industry and intermediary companies to improve patient access to medicines, in line with the ABPI Code of Practice.

With the 10 year plan set out along with growing system pressures and the need to deliver value-driven, patient-centred care, the session will provide practical tips, real-world examples, and policy considerations to help pharmacy leaders navigate effective and compliant partnerships. It will also consider how local policy and governance can be shaped to enable meaningful collaboration that supports innovation, addresses health inequalities, enhances medicines optimisation across pathways.



Kenny Li

Kenny Li is the Chief Pharmacist for NHS Greater Manchester, bringing over 20 years of experience across all areas of pharmacy, with a particular focus on primary care and commissioning. He has extensive expertise in review and redesign of service, as well as commissioning services to operate across ICS geography. His work is driven by a commitment to tailoring services to meet population health needs and addressing health inequalities.

11:55-12:40 Strategic Commissioning by the ICB - The vision How Pharmacy can make this work

This will be an interactive session where we will provide an overview of strategic commissioning and how it affects Pharmacy. I will share the approach to strategic commissioning undertaken by NHS Greater Manchester's Medicines Optimisation team; with plenty of time for discussion and debate.

Speakers



Ewan Maule

Ewan Maule is Clinical Director and Chief Pharmacist at the North East and North Cumbria Integrated Care Board (NENC ICB), where he leads on medicines optimisation, clinical strategy, and system-wide quality improvement. He is an Honorary Professor at Teesside University and an elected member of the English Pharmacy Board at the Royal Pharmaceutical Society, where he is also a Fellow.

Ewan brings over 20 years of experience spanning hospital pharmacy, primary care, and strategic commissioning. He is a nationally recognised leader in medicines use and integrated care, committed to delivering patient-centred, sustainable healthcare solutions.

Known for his collaborative approach and strong clinical leadership, Ewan is actively involved in shaping national policy and regional strategy to improve population health. His work champions innovation, workforce development, and the practical delivery of high-quality care across organisational boundaries.

09:20-10:00 The Future for Pharmacy in the new restructured NHS in England - What we know and the opportunity to lead on medicines use

A facilitated discussion on the future of medicines and pharmacy in the new NHS landscape. Covering issues including:

- professional leadership at this time of change
- how medicines might be optimised across a system in the new world
- what the transfer and delegation of functions might look like over the next 3-5 years
- a view on where the new direction of travel might take us and what the 10 year plan means for medicines and pharmacy



Nick Merrifield

Dr Merrifield is a GP in Kingston-upon-Thames, Primary Care Network Clinical Director, GP Federation Director, Clinical Educator and Deputy Clinical Director in the South West London ICS. He's a believer in collaborative leadership, the potential for primary care at scale and the power of communities and localism. He is an advisor to pharmaceutical industry, higher education and regional and national healthcare policymakers and is a regular speaker at healthcare conferences.

11:00-11:45 Neighbourhood Health - What it means for pharmacy in all sectors of the NHS

Within the 10-year Health Plan was the establishment of Integrated Neighbourhood Health organisations.

The objective of this session is to build a deeper understanding of what Integrated Neighbourhood Health means, and to explore its potential impact across all sectors of pharmacy – including primary care, community pharmacy, and hospital pharmacy.

This 45-minute session will begin with a 20-minute discussion, followed by an open forum to allow maximum audience interaction for questions and any relevant comments.

Speakers



Lelly Oboh

Lelly Oboh is a Consultant Pharmacist (Care of older people) at Guys & St Thomas NHS Trust and NHS Specialist Pharmacy Services and leads implementation of the National Overprescribing Review report recommendations across South East London ICS.

She has over 25 years' experience working in primary care, general practice and community-based multidisciplinary teams caring for older people championing the development of innovative patient-centred care models that actively engage with older people (their carers) to optimise medicines and improve care co-ordination at transition points.

She has provided expertise through membership on strategic groups like the NHSE National Overprescribing group, NIHR Optimising SMRs for Older People to Reduce Overprescribing and Associated Inequalities project, London Frailty Clinical Leadership Group, NICE Guidance Development Groups, and is Chair of the PCPA Clinical Specialists Group.

Lelly is well published and sought after to share her expertise at diverse conferences. She has a keen interest in patient centred approaches to care that consider the complex relationship between frailty, multimorbidity and polypharmacy as well as deprescribing and non-adherence.

11:00-11:45 Neighbourhood Health - What it means for pharmacy in all sectors of the NHS

Within the 10-year Health Plan was the establishment of Integrated Neighbourhood Health organisations.

The objective of this session is to build a deeper understanding of what Integrated Neighbourhood Health means, and to explore its potential impact across all sectors of pharmacy — including primary care, community pharmacy, and hospital pharmacy.

This 45-minute session will begin with a 20-minute discussion, followed by an open forum to allow maximum audience interaction for questions and any relevant comments.



Ankish Patel

Ankish serves as an elected member of the English Pharmacy Board and previously held the roles of Chief Pharmacist and Head of Workforce for a GP Federation in Nottingham. He brings extensive expertise in neighbourhood working, personalised care service delivery, and collaborative pharmaceutical practice.

A dedicated advocate for leadership at local, regional, and national levels, Ankish is committed to creating opportunities for others and ensuring robust representation across the sector. His mission is to drive meaningful change that benefits pharmacists working on the front line—championing enhanced supervision, safer independent prescribing, and tangible improvements for multi-sector pharmacists at every career stage.

11:00-11:45 Neighbourhood Health - What it means for pharmacy in all sectors of the NHS

Within the 10-year Health Plan was the establishment of Integrated Neighbourhood Health organisations.

The objective of this session is to build a deeper understanding of what Integrated Neighbourhood Health means, and to explore its potential impact across all sectors of pharmacy — including primary care, community pharmacy, and hospital pharmacy.

This 45-minute session will begin with a 20-minute discussion, followed by an open forum to allow maximum audience interaction for questions and any relevant comments.

Speakers



Reena Patel

Reena is a highly accomplished pharmacist, clinical safety officer, advisor and senior healthcare strategist providing consultancy & advisory services with over 15 years of experience spanning primary care, secondary care, and system-level healthcare transformation. She serves as a United Nations Women's UK CSW Delegate, Long Term Conditions Advisory Board Member, Technology Enabled Care Expert, STEM Ambassador and School Governor. She specialises in systems leadership, integrating digital innovation, data-driven care, and population health strategies to address health inequalities and improve patient outcomes. Reena is passionate about workforce development and empowering women to develop in healthcare leadership roles and regularly provides coaching and mentoring to individuals.

Reena has led teams to deliver outcomes driven transformation programmes in long-term condition management, digital health innovation and integrated models of care. Her deep understanding of NHS policy, organisational structures, and key system drivers has enabled her to influence and co-produce strategies with stakeholders at all levels. Reena is a sought-after thought leader in healthcare transformation, regularly presenting at national events.

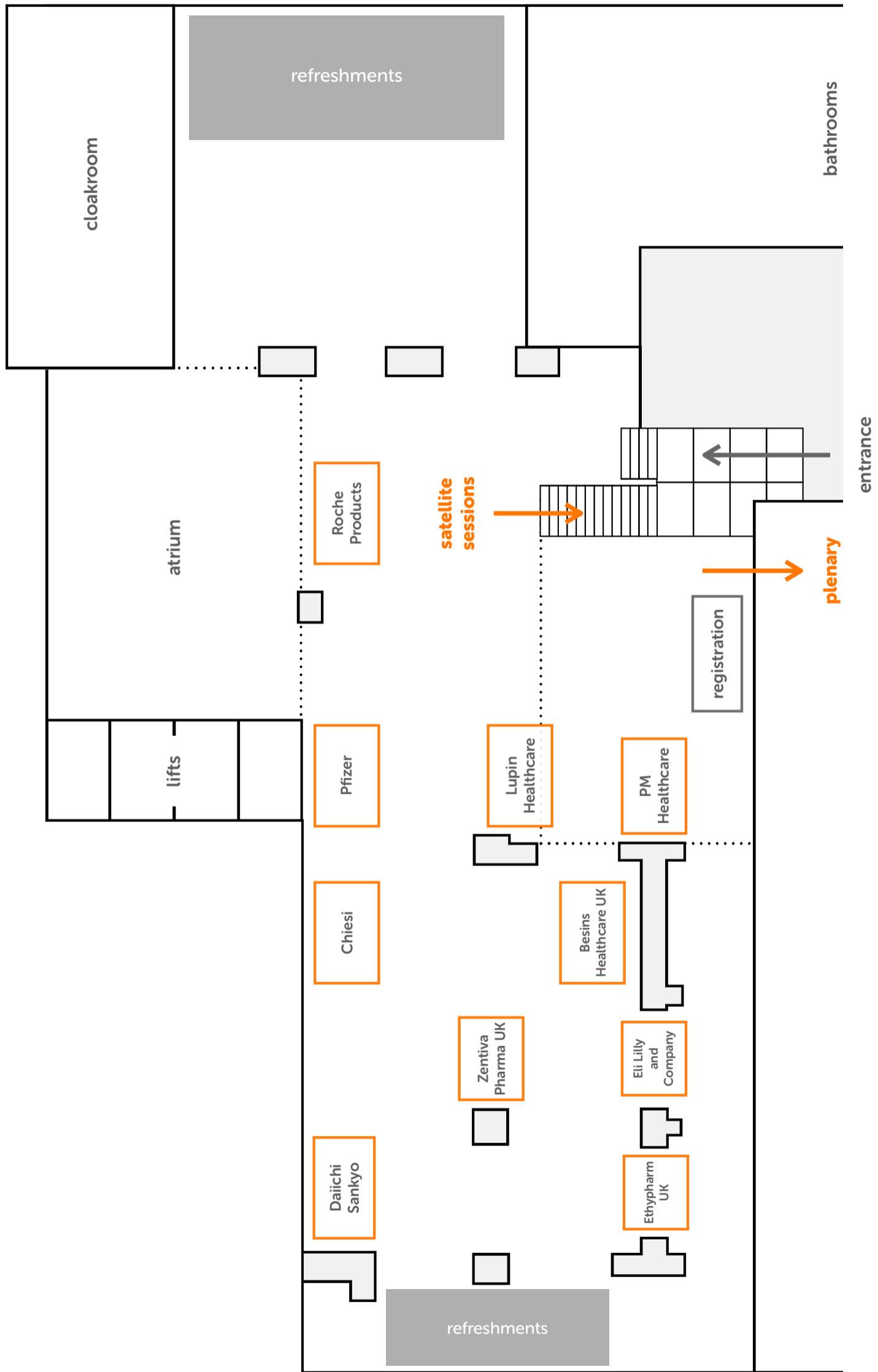
In addition to her NHS work, Reena supports and advises SMEs and healthtech startups on navigating the complexities of the NHS landscape. She helps them refine product-market fit, develop effective positioning strategies, and align their innovations with NHS priorities to maximise impact and adoption.

11:55-12:40 How can the pharmaceutical industry help pharmacy deliver better access to medicines and remain within the ABPI Code of Practice?

This session will explore how pharmacy teams within Integrated Care Systems can work collaboratively with the pharmaceutical industry and intermediary companies to improve patient access to medicines, in line with the ABPI Code of Practice.

With the 10 year plan set out along with growing system pressures and the need to deliver value-driven, patient-centred care, the session will provide practical tips, real-world examples, and policy considerations to help pharmacy leaders navigate effective and compliant partnerships. It will also consider how local policy and governance can be shaped to enable meaningful collaboration that supports innovation, addresses health inequalities, enhances medicines optimisation across pathways.

Floorplan



Education Partner

This event will be funded by the following companies through event sponsorship, sponsored satellite sessions and stand sponsorship. These companies have had no input into the design or content of the conference agenda (other than their own sessions/stands) but will be in attendance on the day.



ViatriS

ViatriS was formed in 2020 following the combination of two global pharmaceutical companies and founded amid the COVID-19 pandemic, at a time of evolving healthcare needs. Our mission is to empower people to live healthier at every stage of life, regardless of geography or circumstance.

We have long and strong roots in the UK where we have had a presence for more than six decades and we are proud to be one of the leading pharmaceutical suppliers in the country. With an extensive portfolio of products across a broad range of therapeutic areas, our medicines cover every stage of life and treat approximately 5 million patients annually, delivering significant value to the NHS and for UK patients.

We consider ourselves a different kind of healthcare company, one who is committed to providing access to medicines, advancing sustainable operations, developing innovative solutions, and leveraging our collective expertise to improve patient outcomes.

Headline Sponsors

This event will be funded by the following companies through event sponsorship, sponsored satellite sessions and stand sponsorship. These companies have had no input into the design or content of the conference agenda (other than their own sessions/stands) but will be in attendance on the day.



AstraZeneca

AstraZeneca is a global, science-led biopharmaceutical company that focuses on the discovery, development, and commercialisation of prescription medicines in Oncology, Rare Diseases, and BioPharmaceuticals, including Cardiovascular, Renal & Metabolism, and Respiratory & Immunology. AstraZeneca operates in over 100 countries and its medicines are used by millions of patients worldwide.

With a proud 100-year heritage in advancing UK science, today AstraZeneca is the UK's leading biopharmaceutical company. The company is based in five different locations across the UK, with its global headquarters in Cambridge. In the UK, around 8,700 employees work in research and development, manufacturing, supply, sales, and marketing. We supply around 36 different medicines to the NHS.

For more information, please visit www.astrazeneca.co.uk and follow us on Twitter [@AstraZenecaUK](https://twitter.com/AstraZenecaUK).

AstraZeneca has provided sponsorship towards this independent Programme. AstraZeneca has had no editorial input into or control over the agenda, content development or choice of speakers, nor opportunity to influence.



Roche

At Roche UK, we focus our energy and investment in developing tests and treatments that change lives and give us more quality time with the people we love. And, together with others, we're aiming to solve healthcare's greatest challenges; helping to achieve better results by connecting early diagnosis to targeted treatment and ongoing support.

Date of Preparation: February 2025 / M-GB-00021496

Roche Products Ltd has provided financial support for this meeting but had no involvement in the agenda other than the stated Roche organised presentation.

Stand Sponsors

This event will be funded by the following companies through event sponsorship, sponsored satellite sessions and stand sponsorship. These companies have had no input into the design or content of the conference agenda (other than their own sessions/stands) but will be in attendance on the day.



Besins Healthcare (UK) Ltd

Besins Healthcare is a pharmaceutical company that specialises in producing high quality reproductive hormone therapies for the patients that need them. Our hormone replacement therapies are trusted by patients and physicians for conditions including menopause, endometriosis, reproductive health, and testosterone deficiency.

<https://www.besinshealthcare.co.uk>

MAT-BHUK-NP-0633 August 2025



Chiesi

Headquartered in Parma, Italy, Chiesi Farmaceutici is an international research-oriented biopharmaceuticals group with over 85 years' experience in the pharmaceutical sector with 31 affiliates worldwide, employing over 7,000 people. Chiesi develops and markets innovative therapeutic solutions in respiratory health, rare diseases, and specialty care. The company's mission is to improve people's quality of life and act responsibly towards both the community and the environment. As a certified B Corp since 2019, Chiesi is part of a global community of businesses that meet high standards of social and environmental impact. Chiesi Limited is headquartered in Manchester employing over 400 people.



Daiichi Sankyo

Daiichi Sankyo is an innovative global healthcare company contributing to the sustainable development of society that discovers, develops, and delivers new standards of care to enrich the quality of life around the world.

With more than 120 years of experience, Daiichi Sankyo leverages its world-class science and technology to create new modalities and innovative medicines for people with cancer, cardiovascular, and other diseases with high unmet medical need. For more information, please visit <https://www.daiichi-sankyo.co.uk>

September 2025 UK/CVD/09/25/0002

Stand Sponsors

This event will be funded by the following companies through event sponsorship, sponsored satellite sessions and stand sponsorship. These companies have had no input into the design or content of the conference agenda (other than their own sessions/stands) but will be in attendance on the day.



Eli Lilly and Company Limited

Lilly is a medicine company turning science into therapies to make life better for people around the world. We've been pioneering life-changing discoveries for nearly 150 years, and today our medicines help more than 51 million people across the globe. Harnessing the power of biotechnology, chemistry and genetic medicine, our scientists are advancing new discoveries to address some of the world's most significant health challenges.

We have been a global leader in diabetes since 1923, and are redefining diabetes and obesity care today. Through research, medicines, technologies, support programs and more, we strive to make life better for people living with diabetes and obesity.

To learn more, visit www.lilly.com/uk or www.linkedin.com/showcase/eli-lilly-and-company-uk-and-ireland/



Ethypharm UK

Ethypharm is an independent pharmaceutical company with a global reach, specialising in pain and substance dependence therapies. Expanding its CNS product portfolio, Ethypharm aims to better serve patients and healthcare providers. Its wide range of injectable products addresses critical care needs in emergency and intensive care units. Additionally, Ethypharm develop complex generics that optimise healthcare costs. For more information on Ethypharm contact us at 01277 266600 or info@ethypharm.com

UK-GP-194

Date of Preparation September 2024



Lupin Healthcare UK

Lupin Healthcare UK is committed to delivering affordable, sustainable, high-quality medicines where they're needed most - supporting the unique challenges facing the UK healthcare system.

We focus on areas of high unmet need, building brands by specialising in complex molecules and difficult to commoditise therapy areas. We apply innovative thinking where others can't, creating long-term value and ensuring continued access to essential treatments. Entrepreneurial and collaborative, we bring global strength with local autonomy, working in partnership with the NHS and industry to improve outcomes for patients, healthcare systems and the planet.

Lupin Healthcare UK: sustainable solutions for a healthier future

www.lupinhealthcare.co.uk | +44 (0) 1565 751378 | information@lupin.com

Stand Sponsors

This event will be funded by the following companies through event sponsorship, sponsored satellite sessions and stand sponsorship. These companies have had no input into the design or content of the conference agenda (other than their own sessions/stands) but will be in attendance on the day.



Pfizer

At Pfizer, we apply science and our global resources to bring therapies to people that extend and significantly improve their lives. We strive to set the standard for quality, safety and value in the discovery, development and manufacture of health care products, including innovative medicines and vaccines. Every day, Pfizer colleagues work across developed and emerging markets to advance wellness, prevention, treatments and cures that challenge the most feared diseases of our time. Consistent with our responsibility as one of the world's premier innovative biopharmaceutical companies, we collaborate with health care providers, governments and local communities to support and expand access to reliable, affordable health care around the world. For 175 years, we have worked to make a difference for all who rely on us. In the UK, Pfizer has its business headquarters in Surrey and is a major supplier of medicines to the NHS. To learn more about our commitments, please visit us at www.pfizer.co.uk or follow us on X ([@Pfizer_UK](https://twitter.com/Pfizer_UK)), Facebook ([@PfizerUK](https://www.facebook.com/PfizerUK)) and Instagram ([@pfizeruk](https://www.instagram.com/pfizeruk)).

PP-UNP-GBR-12878 | August 2025



Zentiva Pharma UK Ltd

Zentiva Pharma UK delivers high-quality, affordable branded generics and value-added medicines (VAMs) across key therapeutic areas. These include mental health, cardiovascular, diabetes, respiratory and pain. Our VAMs offer innovative formulations and dosing designed to improve patient outcomes and prescribing efficiency. With reliable UK distribution and a strong European manufacturing base powered by renewable energy, Zentiva ensures consistent supply and competitive pricing.

For further information or in case of any questions, please contact:

Pharman Ltd

The Stable Yard
Vicarage Road
Stony Stratford
Buckinghamshire
MK11 1BN

T: +44 0333 800 2850

W: www.pmhealthcare.co.uk

E: info@pmhealthcare.co.uk

X: [@pharman](#)

in [@PM Healthcare](#)

Registered in England No. 1576220

